

Scalp, Hair, Loss hair Counseling System.

SIF Series

HI-QUALITY HAIR DIAGNOSIS PROGRAM SYSTEM



HAIR DIAGNOSIS SYSTEM
SIF-III



HAIR DIAGNOSIS SYSTEM
SIF-I

Compact design and portable type machine with screen freeze.
Easy to set 2 partition, 4 partition through one touch method, and can observe comparative images easily.
Available to use x1, x50, x200 optical lens without exchanging lens.
Possible to supply x500, x800, x1000 lens for customer's request.
By using the ultra-violet LED at main body, possible to keep clearness of contacting part.
Possible to make hardware configuration of customer's needs versatility.
Total care program to analyze and prescribe the scalp and hair condition.
Easy to make customer's DB using the customer registration program.
Give suitable care solutions to customers after checking customer's scalp and hair condition.
Give suitable care solutions to customers after observing the damaged hair and hair density.
Possible to catch the symptom of loss of hair through hair thickness measurement.
Possible to guess progressive loss of hair through hair density measurement.
Built-in prescription system.
Print-out the customer's analysis results, can see customer's result history.



CE RoHS

Hair analysis that gives reliability to customers by the **DIGITAL** precision analysis.

Convenient Hardware System • Easy Analysis



>> SIF Characteristics

○ Hardware Characteristics



- (1) Compact design and portable type machine with screen freezer.
- (2) Easy to set 2 partition, 4 partition through one touch method, and can observe comparative images easily.
- (3) Available to use x1, x50, x300 optical lens without exchanging lens.
- (4) Possible to supply x600, x800, x1000 lens for customer's request.
- (5) By using the ultraviolet LED at main body, possible to keep cleanliness of contacting cap.
- (6) Possible to make hardware configuration of customer's needs versatily

○ Software Characteristics



- (1) Total care program to analyze and prescribe the scalp and hair condition.
- (2) Easy to make customer's DB using the customer registration program.
- (3) Give a suitable care solutions to customers after checking customer's scalp and hair condition.
- (4) Give a suitable care solutions to customers after observing the damaged hair and dandruff.
- (5) Possible to catch the symptom of loss of hair through hair thickness measurement.
- (6) Possible to guess progressive loss of hair through hair density measurement.
- (7) Print-out the customer's analysis results, can see customer's result history.

○ Certification



○ Sales Point

01

The Adequate Hair(Perm,Dyeing,Cut...) after measured scalp and hair type.

Is there a lot of claims of customer's hair damage in cause of the uniform perm or dyeing, cut, etc?
Please upgrade the operation of the adequate customer type through the hair analysis.

02

Suggestion of Scalp, Hair Management Products for the adequate type.

How to recommend products to customers by a criterion?
Please satisfy customers with the scalp, hair management products that is adequate for the customer type.

03

Proof of Effects after Loss Hair Clinic.

Was it difficult to prove the effects after loss hair clinic or loss hair products using?
Please confirm the effect of after and before of clinic by using PSI's hair analysis system.
Possible to prove the effects through the transition graph.



>> Software contents

○ Hair & Scalp inspection

(1) Customer registration



- Registration for new customer
- Use x1 hand scope

(2) Questionnaire



- Questionnaire1 to 10
- Questionnaire and inspection

(3) Scalp inspection



- Scalp inspection [Dry, Oily, Neutral]
- Use x300 hand scope

(4) Hair inspection



- Hair inspection Watching and checking
- Use x300 hand scope

○ Progressive loss of hair inspection

(1) Questionnaire



- 1 to 13 For Male
- 1 to 15 For Female
- Questionnaire about hairs from falling out symptom progress

(2) Hairs thickness inspection



- Estimate the symptom through hair thickness and it is inspection
- Use x300 hand scope

(3) Hair density inspection



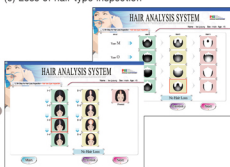
- Hair density difference inspection in 10cm² box
- Use x50 hand scope

(4) Symptom deepness inspection



- Hairs from falling out symptom inspection from the top of the head
- Use x1 hand scope

(5) Loss of hair type inspection



- Check loss of hair type from the each inspection steps
- Symptom type inspection and leave as a history for further treatment
- Screen Sorts according to Sex

○ Analysis result & History

(1) Analysis result



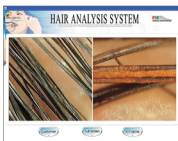
- Checking result and print out

(2) Result history



- Latest 10 times analysis result watching
- Print out to the customer

○ Hair & Scalp inspection



- Easy to compare before and after using shampoo and treatment through 2 or 4 partition screen

○ System Organization



Product Name : SIF-III

Contents

- 1.Computer
- 2.USB Mini Keyboard
- 3.USB Mouse
- 4.Handy Scope(X1 ~ X50)
- 5.Handy Scope(X300)
- 6.CD-ROM
- 7.Rotatable LCD

Computer Specifications

OS (Window XP, Vista), Intel mobile 1.7GHz, DDR RAM 1G, USB2.0, HDD 80G



Product Name : SIF-I

Contents

- 1.Mainbody
- 2.Handy Scope(X1~X50)
- 3.Handy Scope(X300)
- 4.Frame Grabber, Adaptor, Image/Communication Interface Cable, USB Cable

Computer Specifications

OS (Window XP)
CPU : 800MHz Above
HDD : 10G Above
RAM : 256 Above

It is also possible to use in Laptop computer (USB2.0 Specification)

Production Company

PSI Co., Ltd.

<http://www.psiopt.com>

122-171 Mahyang-Dong, Padal-Gu, Suwon-City

GyeongGi-Do, South Korea

Tel : 82 - 31 - 255 - 8658

Fax : 82 - 31 - 255 - 8659

E-Mail : cosmetic@psiopt.com

